



I. Light steel structure building is a new type of building structure system, which is formed by the main steel framework lining up H section, Z section and U section steel components, roof and walls using a variety of panels and other components such as windows, doors, cranes, etc.  
Light steel structure building is widely used in WAREHOUSES, large factories, etc.

II. Characteristics

1. Wide span: single span or multiple spans, the max span clear distance is 36m, without middle columns.
2. Low cost
3. Fast construction and easy installation
4. Long term service life: more than 50 years
5. Other characteristics: environmental protection, stable structure, earthquake resistant, water proof, and energy efficient

III. Main parts of the steel structure building:

Main Steel Frame	H section steel	Q345 steel 8mm/10mm	
	Welding	Automatic Submerged Arc Welding	
	Rust removing	Sand blasting	
	Surface processing	Alkyd Paint or galvanized	
	Intensive bolt	Grade 10.9	
Supporting System	Angle Brace	L50x4, Steel Q235, Process and Painting	

	Cross Support	Φ20, Steel Q235, Process and Painting	
	Belt Bar	Φ89*3, Steel Q235 Process and Painting	
	Small Brace	Φ12, Steel Q235 Process and Painting	
	Ordinary Bolt	Galvanized Bolt	
Roof	Purlin	C160*60*2.5, Steel Q235, painting and Galvanized	
	Out-roof Panel	Sandwich Panel or corrugated steel plate	
	Transparent lighting panel	6mm thick PVC	
	Accessories	Glass glue, self-tapping screw etc.	
	Edge Cover	Made of color steel sheet thickness 0.5mm	
	Gutter	Made of steel sheet thickness 0.8mm	
	Rainspout	Φ110PVC	
Wall	Purlin	C160*60*2.5, Steel Q235, Paint	
	Wall	sandwich panel or corrugated steel plate	
	Accessories	Glass Cement, Self-tapping Screw etc.	
	Edge Cover	Made of color steel sheet thickness 0.5mm	

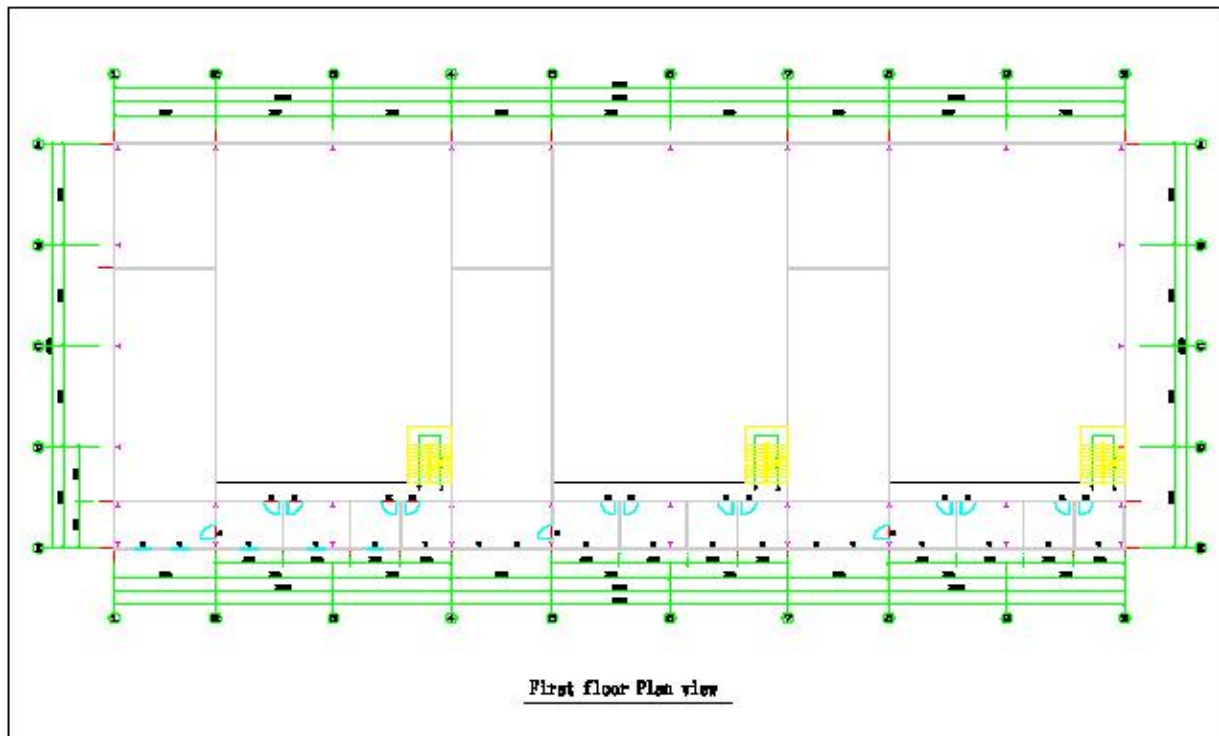
	Axial Fan	Axial Fan	
	Door & window	Rolling door/sliding door PVC/alu/steel window	 
Crane	Crane	With or without crane in 5 tons to 20 tons	

#### IV. Sample Finish Products

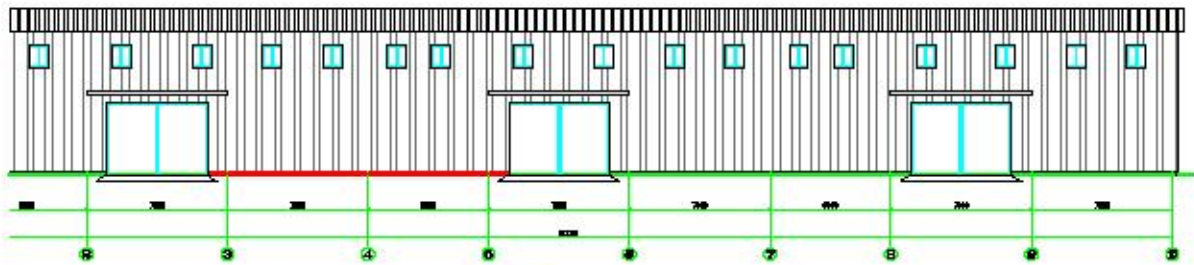


#### V. Typical drawings:

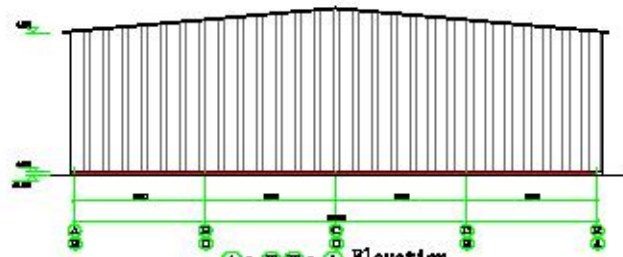
##### 1. Layout drawing



2. Vertical view:

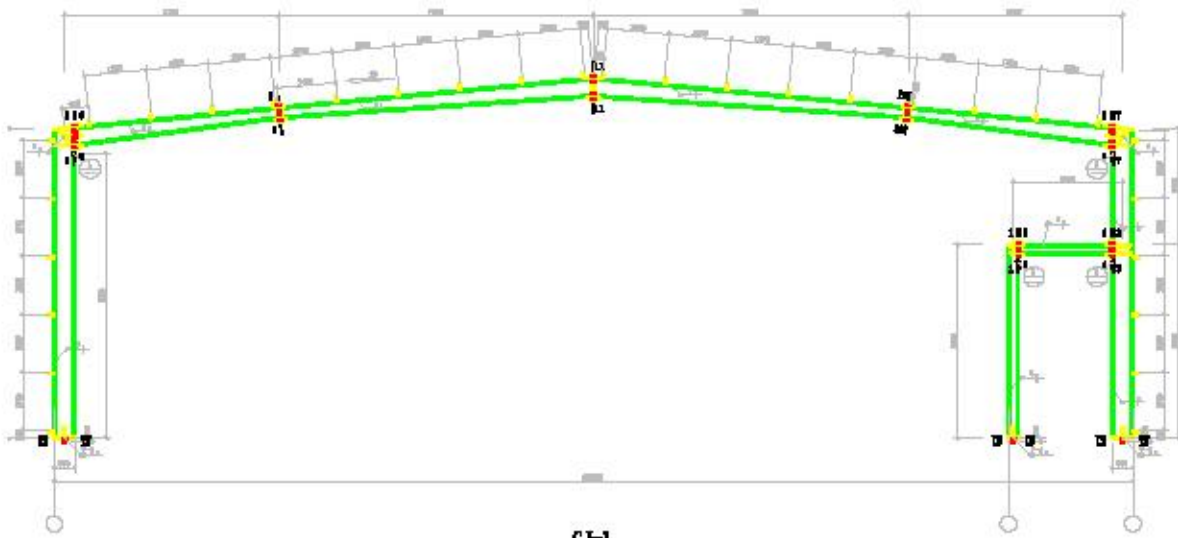


①~⑩ Elevation

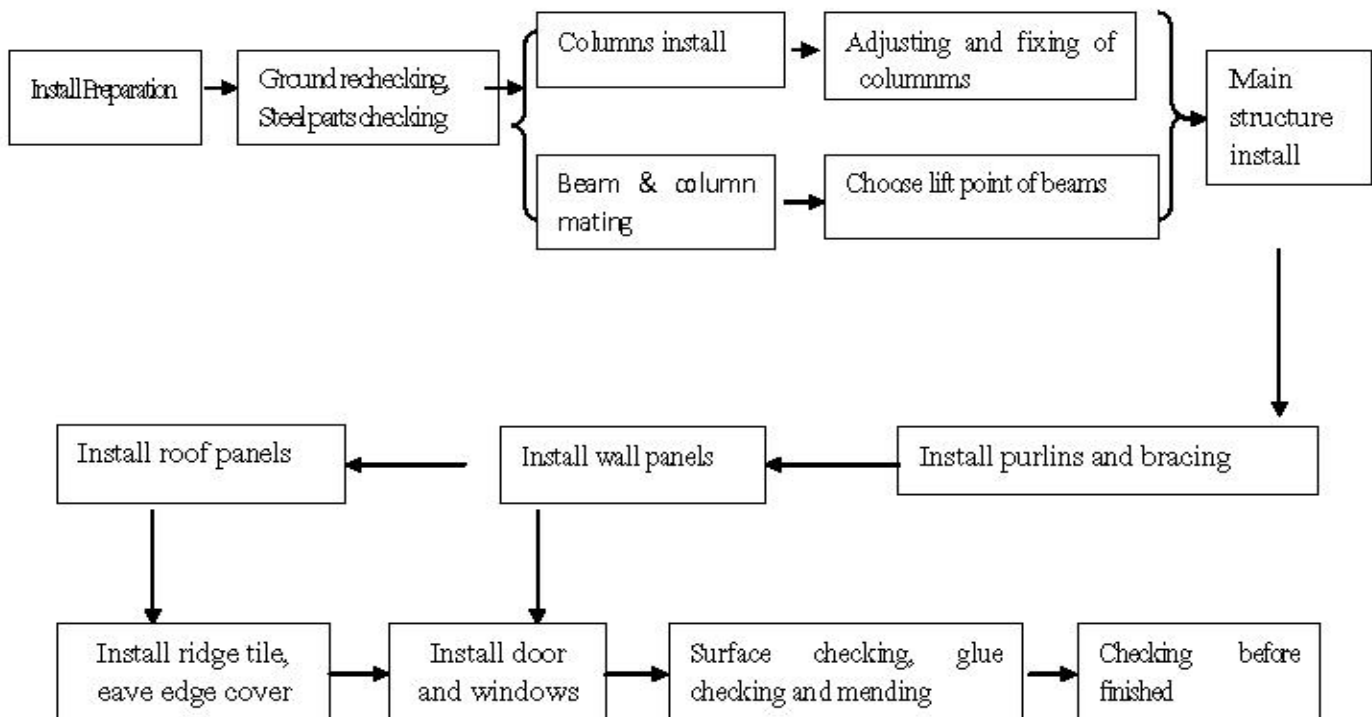


A~E Elevation

3. Cut view:



## VI. Installation process:



## VII. Price, Installation and Delivery Lead Time

Delivery Lead Time: 30-45 days after receipt of down payment

Installation on site: 15 to 60 days (not inclusive of flooring and foundation)